

Customer Bulletin

Product Model Name: Plasmon UDO Driver

Date: July 2007

Reference ECO No: N/A

Reason for Bulletin

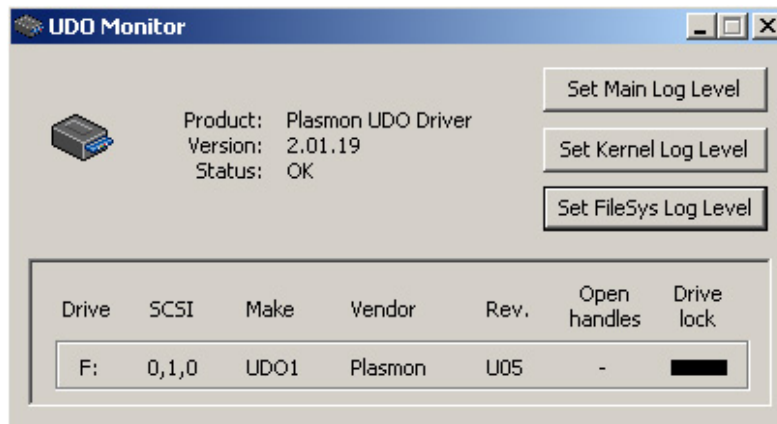
The Plasmon UDO Windows driver version 2.02.XX should **not be** used to write UDO WORM media using the UDF file system on UDO30 or UDO60 drives.

Description

Plasmon has identified an issue with the implementation of the UDF filesystem on UDO WORM Media using the driver version 2.02.XX and above. The driver UDF implementation is not read or write compatible with any other UDF implementations. This includes WORM media formatted by another driver, including the UDO driver version 2.01, version 1.02 or any Diamond software version.

How Do I Determine My Driver Version?

The driver version can be determined by running a utility called UDOMon.exe that resides in the C:\Program Files \ UDO Driver directory. When UDOMon.exe is executed the window shown below will be displayed. The driver version shown below is 2.01.19.



Resolution

If writing WORM media using the UDF file system version 2.01.XX of the Plasmon UDO driver should be utilized. Future releases of the driver will resolve this problem and will be noted in the driver release notes. If you have already written UDF WORM media using version 2.02.XX contact Plasmon Technical Support to discuss migration of the data to a compliant version of the UDF filesystem.

Contact Information for Technical Questions:

Americas and Asia Pacific

Plasmon Technical Support Team
United States Calls: 1-877-585-6793
International Calls: 1-719-593-4437
Fax: 1-719-593-4192
Email: tech.support@plasmon.com
Internet: www.plasmon.com

Europe, Africa, and Middle East

Plasmon Technical Support Team
United States Calls: +44 (0) 1763 262 963
Fax: +44 (0) 1763 264 407
Email: support@plasmon.co.uk
Internet: www.plasmon.co.uk