



PRODUCT MODEL NAME: Plasmon 1800 Series Libraries

DATE: 8/09/2000

PTI#: 1800-04

Plasmon 1800 Libraries CAM Follower Bearing Replacement

This technical publication is the property of Plasmon and is confidential information for reference purposes by authorized service personnel.

Problem Description: When the cam follower bearings fail, the unit previously required the entire V-Housing assembly replaced. Plasmon recognizes the time and labor constraints of this operation and is offering a Cam Follower Bearing Replacement Kit Part Number 501951-000 and replacement bearings Part Number 410-20903-01. The kit will include the bearing alignment tool and 4 bearings. The instructions below state how the bearing must be replaced for continued reliability. **The cam follower bearings must not be replaced without the tool.**

Serial Numbers Affected: Serial Number 2000 and Above

Solution: The following pages contain the removal, replacement and alignment procedures. Please add the following pages to the appropriate sections of the 1800 Service Manual. This procedure requires a Basic 1800 trained field engineer. **Failure to perform the alignment procedure will result in premature V-Housing Roller wear.** Plasmon is not responsible for improper installation or premature V-bearing failure.

CAM Follower Bearing Replacement Kit with Tool	501951-000
CAM Bearing	410-20903-01

Part Warranty: Not Applicable

5.34 CAM Follower Bearing Removal and Replacement

1. In order to assure proper bearing alignment remove the front and rear counter weight bearing channels via the 4 screws shown in figure 3-34 with a 9/64" allen. The allen screws are denoted by arrows.

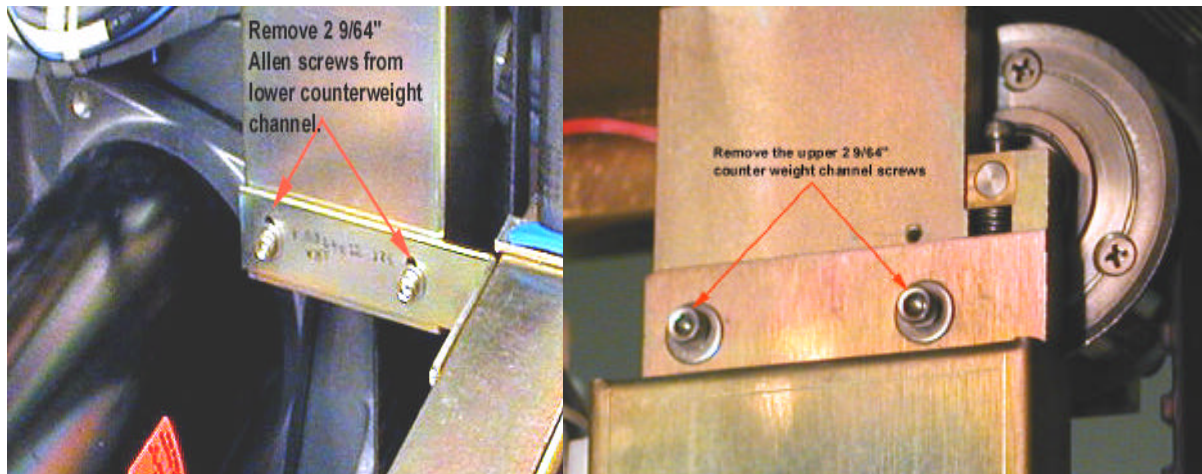


Figure 5-34. Counter Weight Channel Screw Removal

2. Disengage the brake by turning the brake screws (Page 4-4 Installation Manual) clockwise until the screw touches the brake plate; then turn one more turn. Position the carriage in front of slot 16. Engage the brake (This allows access to the front and rear bearings).
3. Remove the 2 qty. 8-32 x 3/8" allen screws and the 1 qty 8-32 x 5/16" allen screws. (Note: the 8-32 x 3/8" screws have 2 #8 lock washers and the 8-32 x 5/16" has 1 #8 lock washer. See figure 5-35).

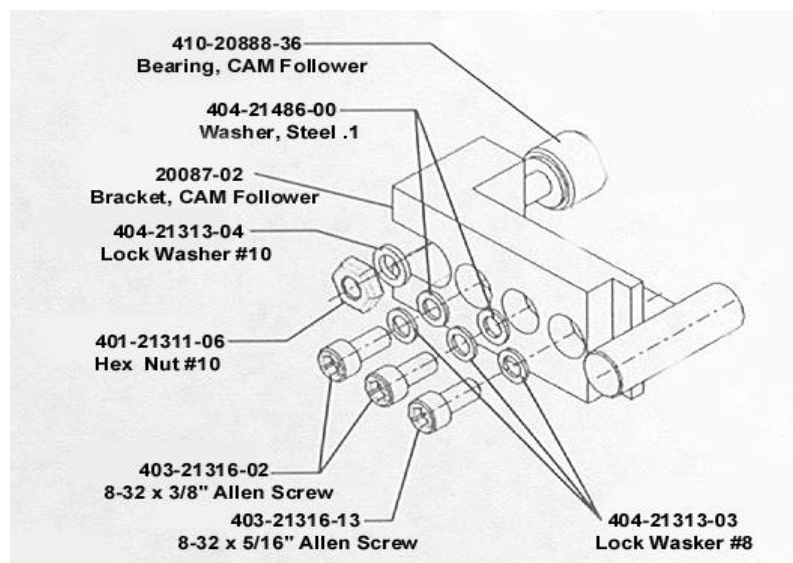


Figure 5-35 Cam Bearing Assembly

4. Remove the bearing from cam follower bracket via the 1/8" allen screw. Remembering that the lock washer and nut on the other side will fall. See figure 5-36

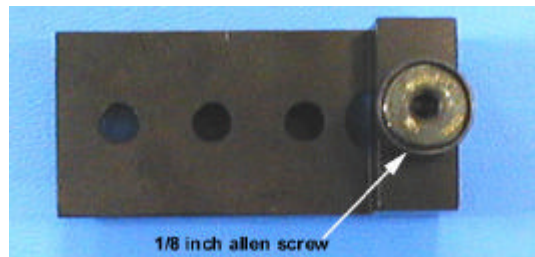


Figure 5-36 CAM Bearing Removal

5. Install the new cam follower bearing to the cam follower bracket making sure that the washer is in place prior to assembly.
6. Reinstall the cam follower bracket to carriage and snug allen screws.
7. Perform 5.34 CAM Bearing Alignment Procedure

NOTE: Do not run attempt to run the jukebox until the alignment procedure is performed.

6.11 CAM Follower Bearing Alignment

Tools: CAM Bearing Toggle Pliers (PN 202147-000)

Reference: Figures

1. Loosen the 3 allen screws so that the CAM follower bearing assembly has slight movement.
2. Using the CAM bearing toggle pliers position the pin part of the tool against the bracket of the CAM follower bearing. Refer to Figure 6-20.

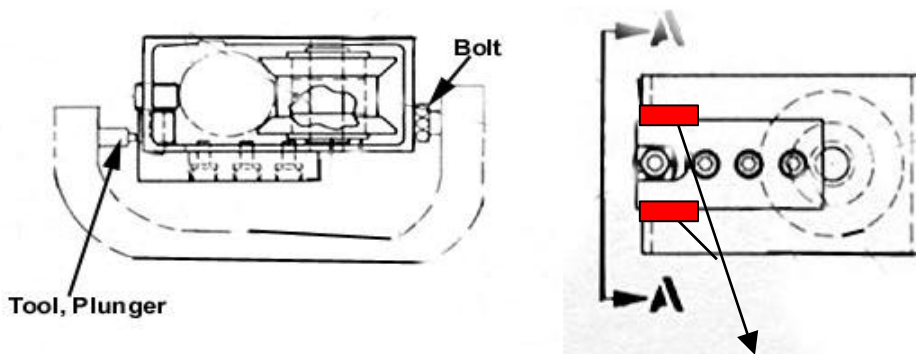


Figure 6-20 Bearing Tool Placement Keep the gap even and bearing straight

Figure 6-21 Bearing Gap

3. Clamp the pliers closed and keep the bearing level with an even gap. Refer to Figure 6-21.
3. Tighten the screws. Do not over-tighten the 3 allen screws. If screws are stripped V-Housing assembly must be replaced.

If there are any questions contact Plasmon Product Support.